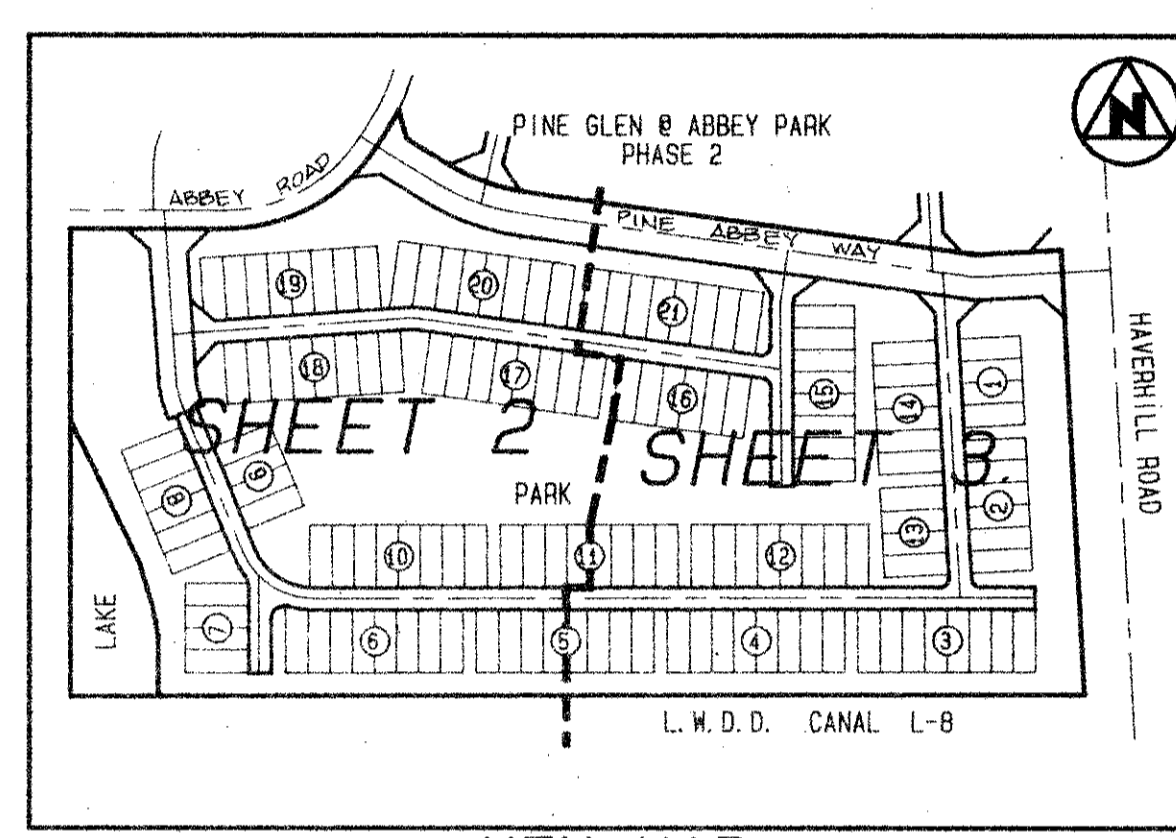
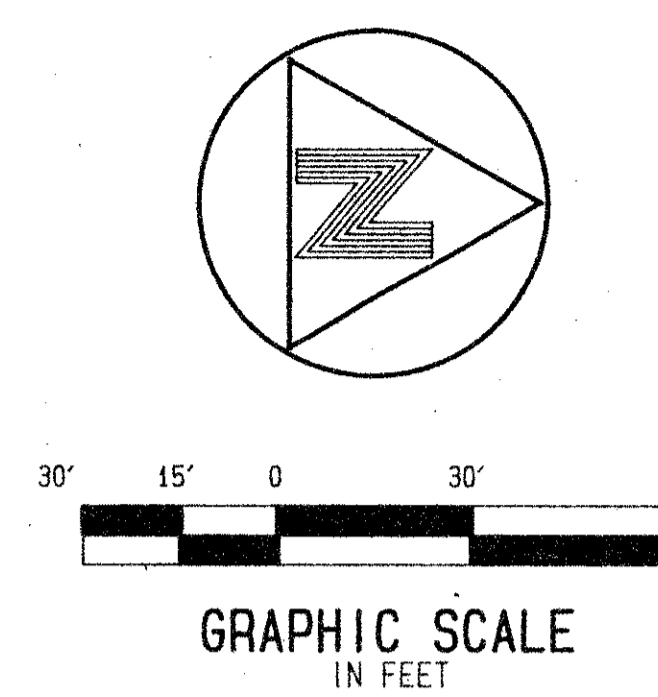
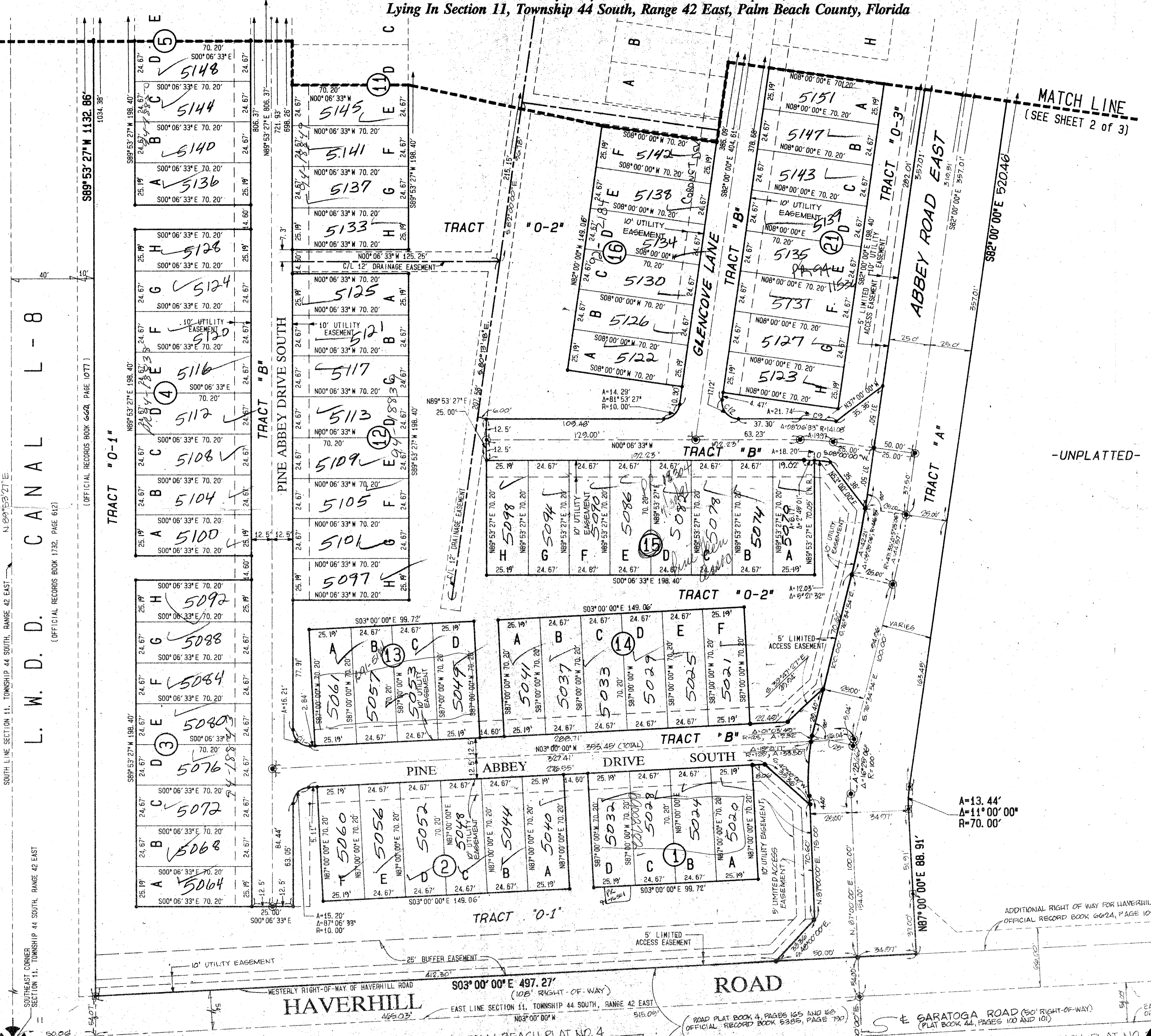


Pine Glen At Abbey Park Plat No. 1

A Part Of Abbey Park, A Planned Unit Development,
Lying In Section 11, Township 44 South, Range 42 East, Palm Beach County, Florida

185



Curve	Length	Delta	Radius
C9	21.74'	08°06'33"	153.56'
C10	19.20'	08°06'33"	128.58'
C11	16.21'	92°53'27"	10.00'
C12	17.12'	08°06'33"	10.00'

0190-007
Pet. 79-161

- SURVEYOR'S NOTES AND LEGEND:**
- END LOT AREAS ARE 1700 SQUARE FEET (TYPICAL) U.O.N. INTERIOR LOT AREAS ARE 1700 SQUARE FEET (TYPICAL) U.O.N.
 - BEARINGS SHOWN OR STATED HEREON, ARE BASED ON, OR ARE RELATIVE TO THE BEARING OF NORTH 89°53'27" EAST ALONG THE SOUTH LINE OF SECTION 11, TOWNSHIP 44 SOUTH, RANGE 42 EAST, STATE PLANE GRID AZIMUTHS, FLORIDA EAST ZONE, AS PUBLISHED BY PALM BEACH COUNTY ENGINEERING DEPARTMENT.
 - IN THOSE INSTANCES WHERE UTILITY/DRAINAGE STRUCTURES ARE CONSTRUCTED IN CONFLICT WITH THE PLATTED PERMANENT CONTROL POINTS (P.C.P.) POSITION, STRADDLERS MONUMENTED AS PERMANENT CONTROL POINTS WILL BE SET TO REFERENCE THE PLATTED P.C.P. POSITION, UNLESS OTHERWISE NOTED.
 - 50 FT. DENOTES SQUARE FEET
 - C/L DENOTES A CENTERLINE
 - (N.R.I) DENOTES A NON-RADIAL LINE
 - ⊕ DENOTES A SET #2424 PERMANENT REFERENCE MONUMENT (P.R.M.)
 - ⊙ DENOTES A SET #2424 PERMANENT CONTROL POINT (P.C.P.)
 - U.O.N. DENOTES "UNLESS OTHERWISE NOTED"
 - THIS INSTRUMENT WAS PREPARED BY WILLIAM R. VAN CAMPEN, R.L.S., IN AND FOR THE OFFICES OF BENCH MARK LAND SURVEYING & MAPPING, INC., 4152 WEST BLUE HERON BOULEVARD, SUITE 121, RIVIERA BEACH, FLORIDA

BENCH MARK
LAND SURVEYING & MAPPING, INC.
RIVIERA BEACH, FLORIDA (407) 848-2102
WEST PALM BEACH, FLORIDA (407) 798-9234

Record Plat
Pine Glen At Abbey Park Plat No. 1
SCALE: 1" = 30'
CADD FILE: P1-A3
N.O. P. 35
3 of 3

TAL 289

BOOK 67
PAGE 185
FLOOD HAZARD ILSB
ZONING RM
579-161
SUB NAME ABBEY PARK
11/14/02

67/185